

Clinical Image

A Floral Tribute to Medical Imaging

Anu Kapoor*

Department of Radiology, Nizams Institute of Medical Sciences, Hyderabad, Telangana, India

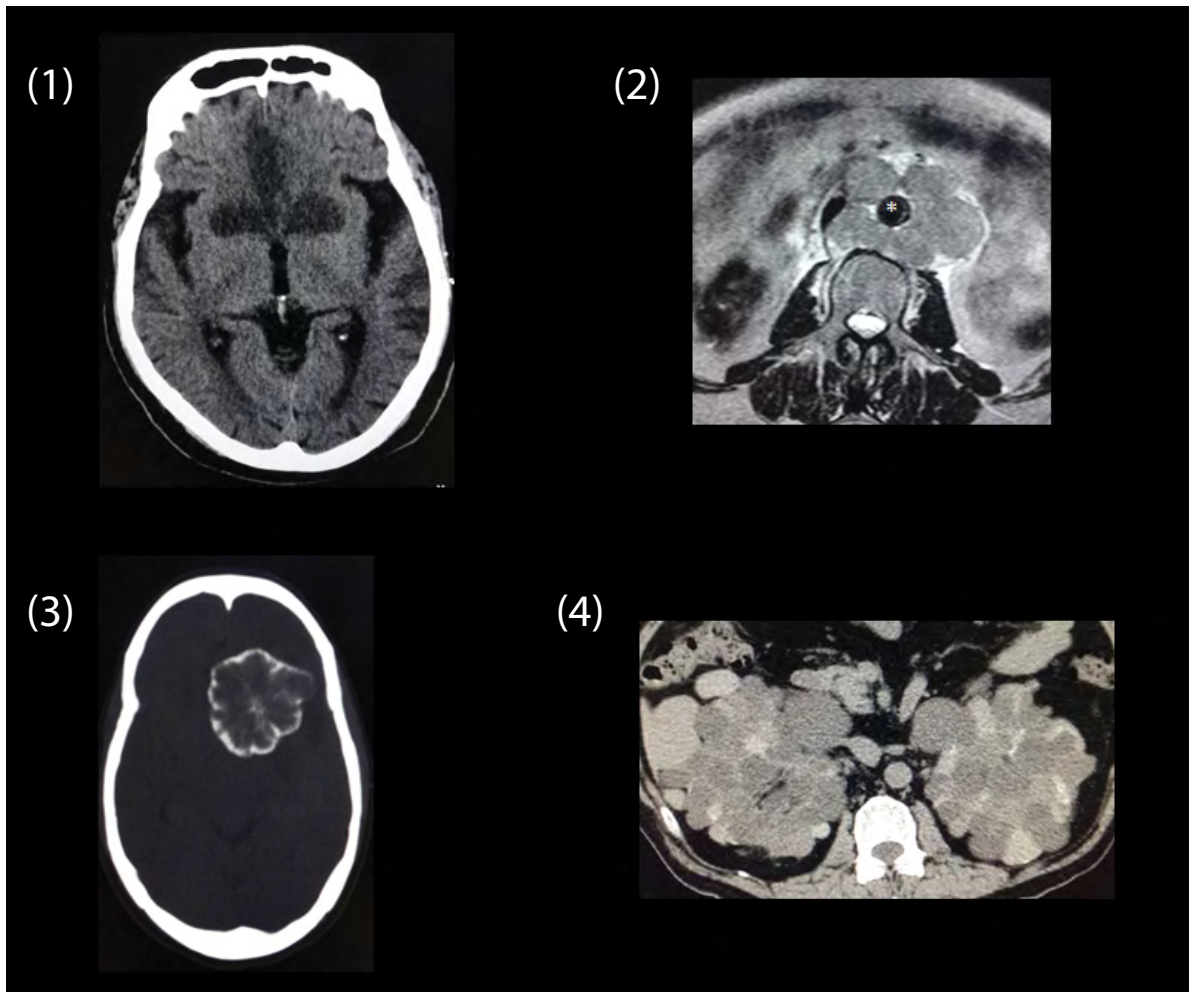


Image 1: Axial CT image of the brain depicting bilateral anterior cerebral artery (aca) territory infarcts in a patient with azygos aca.

Image 2: Axial T2 W MR image of the abdomen showing multiple enlarged retroperitoneal lymph nodes surrounding the abdominal aorta (*).

Image 3: Axial CT image of the brain (in bone window settings) showing a large calcified meningioma in basifrontal location.

Image 4: Axial CT images through the abdomen in a case of autosomal dominant polycystic kidney disease showing enlarged kidneys studded with multiple cysts of variable attenuation values.

Radiology plays a pivotal role in the workup of patients from various subspecialties of medicine. The ever-increasing spectrum of imaging tools enables accurate diagnosis and facilitates timely patient management. A radiologist browses hundreds and thousands of images while evaluating cases and every once in a while, comes across interesting images that are unique in their own way. The set of images (Images 1-4) presented here peculiar for they all represent different pathologies while bearing a great semblance to flowers.

*Corresponding author: Anu Kapoor, Department of Radiology, Nizams Institute of Medical Sciences, Hyderabad, Telangana, India; Email: kapoor_anu@yahoo.com

Citation: Kapoor A (2016) A Floral Tribute to Medical Imaging. *Int J Clin Med Imaging* 3: 489. doi:10.4172/2376-0249.1000489

Copyright: © 2016 Kapoor A. This is an open-access article distributed under the terms of the Creative Commons Attribution License, which permits unrestricted use, distribution, and reproduction in any medium, provided the original author and source are credited.