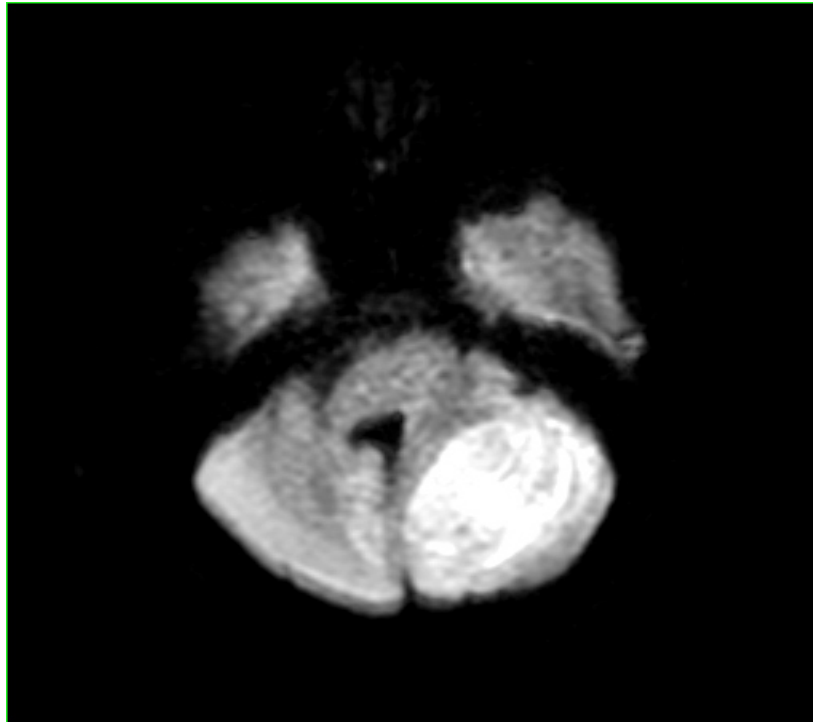


## Clinical Image

### **Title: Assessment with MR Imaging: Diffusion-weighted image**

**Zhanh Wei**

*Department of Radiology, Obstetrics and Gynecology Hospital, Fudan University*



Lhermitte-Duclos disease (LDD), or dysplastic gangliocytoma of the cerebellum, is a rare hamartomatous lesion of the cerebellar cortex which may be associated with Cowden's syndrome and the PTEN germline mutation. In this report, we describe a case of pathology proven LDD. The clinical presentation, radiological features and histopathologic findings are described, and the relevant literature is reviewed. The lesion demonstrated high signal intensity on Diffusion-weighted image (DWI).