

Clinical Image

Chest CT Results in Diagnosis of Post-traumatic Haemato Pneumatocele

Adriana Nohemi Garcia Herrera*

Pre-hospital Emergency Medical Services (UVI-Movil Pamplona), Pamplona, Spain

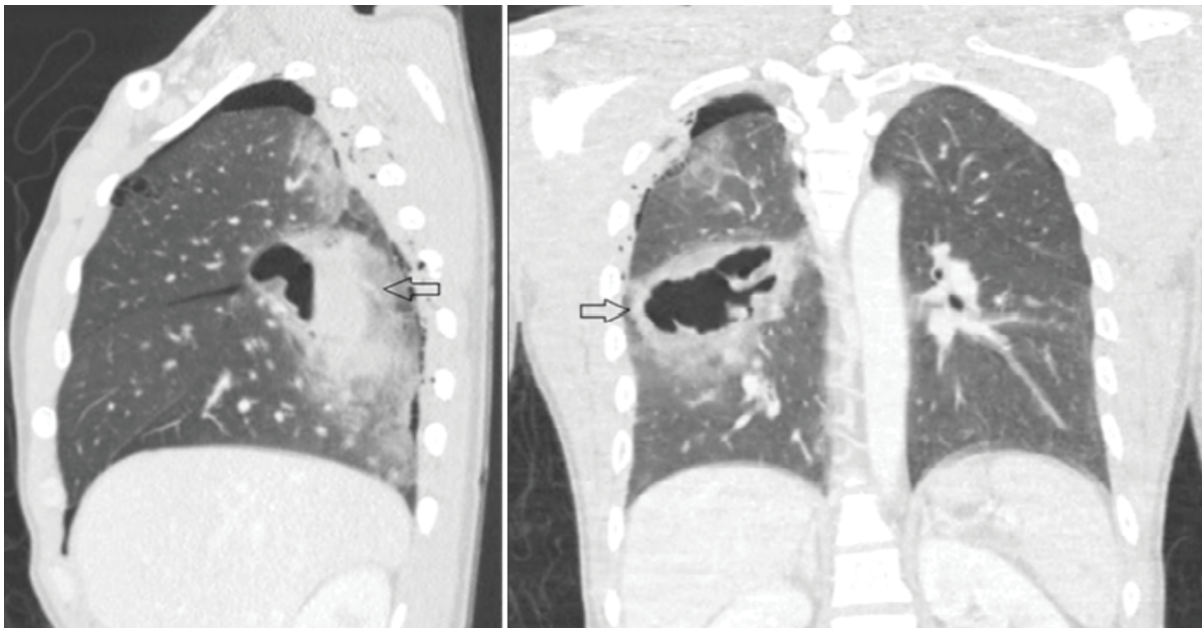


Figure 1: Chest CT (sagittal and coronal planes), right haemato-pneumatocele (arrow).

Clinical Image

A 37-year-old man presented to the Emergency department with multiple injuries after he was hit by a van. He was conscious, hemodynamically and respiratory stable. CT image showed a right-sided round collection suggestive of haemato-pneumatocele (arrows), small pneumomediastinum and hemothorax as well as right rib fractures (3rd through 7th) (Figure 1). Haemato-pneumatocele is an air/blood cavitory lesion in the lung parenchyma following blunt thoracic trauma. It is characterized by minor clinical symptoms and major radiologic signs. The formation of this lesion requires a direct violent impact which explains its frequency in young adults. Though rarely described, its frequency is certainly underestimated. Their clinical implications are minimal and have a favorable evolution with spontaneous resolution of the radiological abnormalities. No aggressive intervention is required. This patient had an uncomplicated clinical course.

*Corresponding author: Adriana Nohemi Garcia Herrera, Plaza Sancho Abarca 1, 3 B 31014, Pamplona, Navarra, Spain, Tel: +351 229 410 100; E-mail: herrera.adriana@gmail.com

Citation: Herrera ANG (2017) Chest CT Results in Diagnosis of Post-traumatic Haemato Pneumatocele. *Int J Clin Med Imaging* 4: 581. doi:10.4172/2376-0249.1000581

Copyright: © 2017 Herrera ANG. This is an open-access article distributed under the terms of the Creative Commons Attribution License, which permits unrestricted use, distribution, and reproduction in any medium, provided the original author and source are credited.