

Clinical-Medical Image

Coronary Artery Rupture Due to Giant Coronary Artery Aneurysm

Masatsugu Shimizu*

Department of Cardiovascular Surgery, Shin-Kuki General Hospital, 418-1 Kamihayami, Kuki city, Saitama, Japan

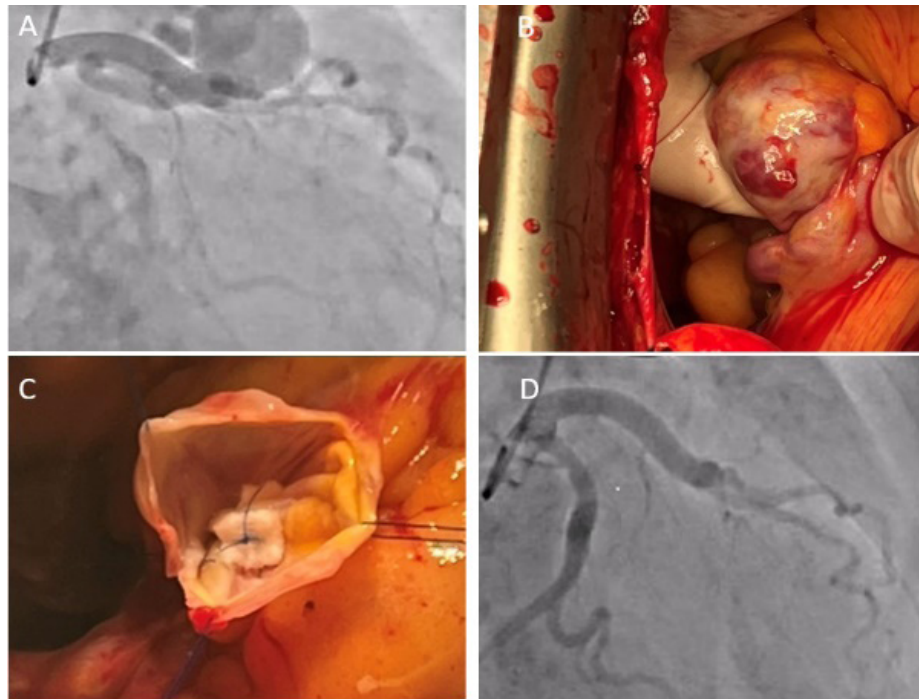


Figure 1: (A) Preoperative CAG showed coronary artery aneurysm in the LAD, (B) A coronary artery aneurysm in the LAD, (C) closed coronary artery - pulmonary artery fistula by direct suture and (D) Postoperative CAG showed coronary artery aneurysm in the LAD disappeared.

Clinical-Medical Image

The patient was a 70-year-old woman. She was brought to the emergency room with shock vitals after requesting emergency care due to chest discomfort. CT showed pericardial effusion and CAG showed giant coronary artery aneurysm in the LAD region (Figure 1(A)). The patient underwent emergency surgery with a diagnosis of ruptured coronary artery aneurysm. The operative findings showed a giant coronary artery aneurysm in the LAD region (Figure 1(B)) and the aneurysm was sutured through an incision under cardiac arrest (Figure 1(C)). Postoperative CAG showed that the aneurysm had disappeared (Figure 1(D)) and the patient was discharged from the hospital uneventful. Although ACS due to thromboembolism is a well-known cause of coronary artery aneurysms, the frequency of rupture cases is rather low and intraoperative imaging findings are relatively rare, so we report this case here.

Keywords: Coronary artery aneurysm; Rupture; Emergency operation

Conflict of Interest

None of the authors has any conflicts of interests to disclose.

Received: 30 April 2023, Manuscript No. ijcmi-23-97471; **Editor assigned:** 01 May 2023, Pre QC No. P-97471; **Reviewed:** 09 May 2023, QC No. Q-97471; **Revised:** 10 May 2023, Manuscript No. R-97471; **Published:** 17 May 2023, DOI:10.4172/2376-0249.1000896

***Corresponding author:** Masatsugu Shimizu, Department of Cardiovascular Surgery, Shin-Kuki General Hospital, 418-1 Kamihayami, Kuki city, Saitama, Japan; Tel: +81-4-80260033; E-mail: masa.shimizu.cvs@gmail.com

Citation: Shimizu M. (2023) Coronary Artery Rupture Due to Giant Coronary Artery Aneurysm. Int J Clin Med Imaging 10:896.

Copyright: © 2023 Shimizu M. This is an open-access article distributed under the terms of the Creative Commons Attribution License, which permits unrestricted use, distribution and reproduction in any medium, provided the original author and source are credited.