

Clinical Image

Extensive Peripheral Arterial Disease

Gaurav K Sharma*, Angie Tripathi, Taimur Abbasi and Michael Megaly

Department of Internal Medicine, Mercy Hospital & Medical Center, Chicago, IL, United States

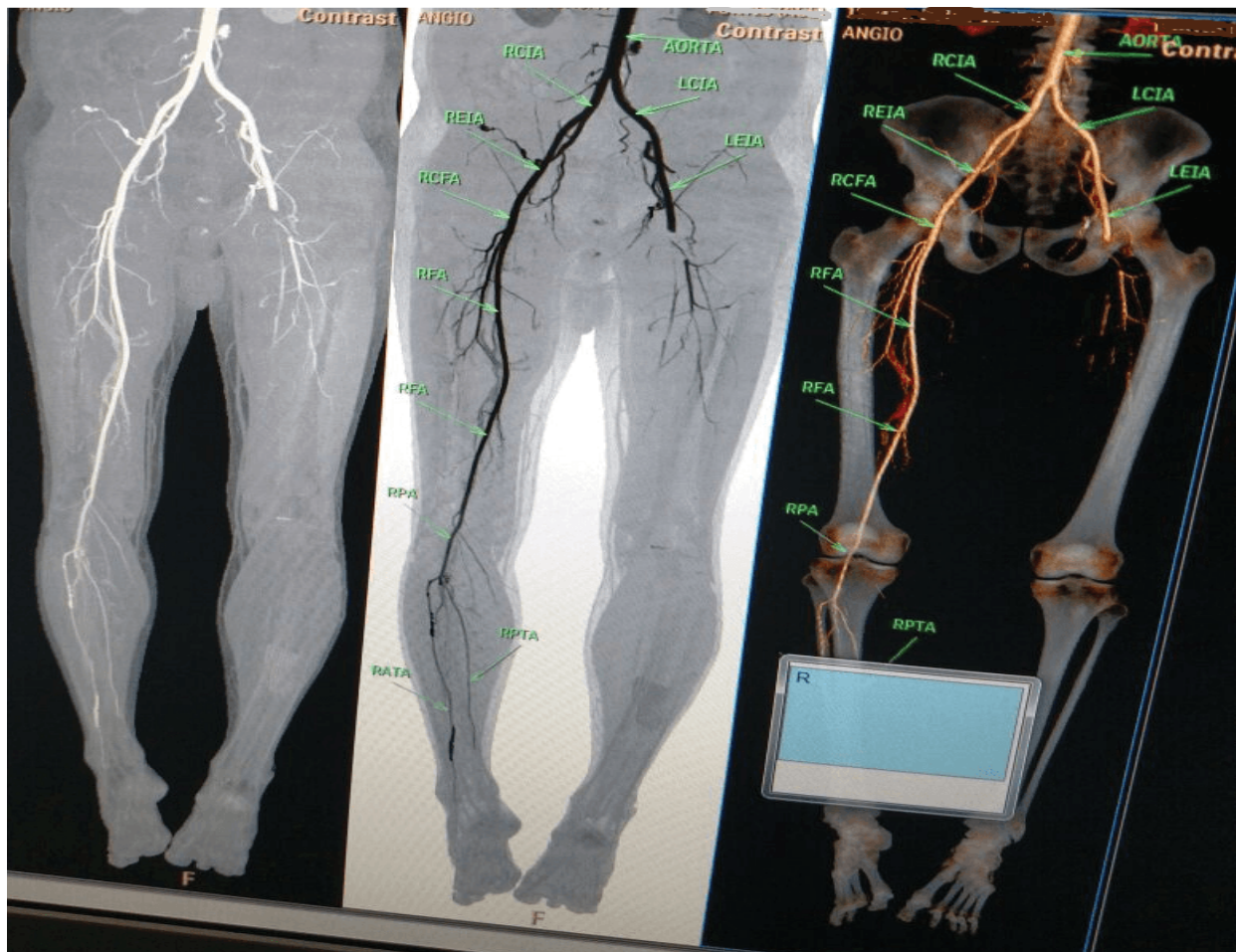


Figure: Total occlusion of Left Common Femoral Artery (LCFA).

A 54 year-old man presented to the hospital with cramping leg pain for several months duration. Physical Examination elicited no palpable popliteal, tibial, or dorsal pulses in the left leg. Lower extremity angiogram showed a complete occlusion of the left lower extremity pulses below the left external iliac artery (Figure).

*Corresponding author: Gaurav K Sharma, Department of Internal Medicine, Mercy Hospital & Medical Center, Chicago, IL-60616, United States, Tel: 630-287-0929; E-mail: gauravsk6@yahoo.com

Citation: Sharma GK, Tripathi A, Abbasi T, Megaly M (2016) Extensive Peripheral Arterial Disease. *Int J Clin Med Imaging* 3: 498. doi:10.4172/2376-0249.1000498

Copyright: © 2016 Sharma GK, et al. This is an open-access article distributed under the terms of the Creative Commons Attribution License, which permits unrestricted use, distribution, and reproduction in any medium, provided the original author and source are credited.