

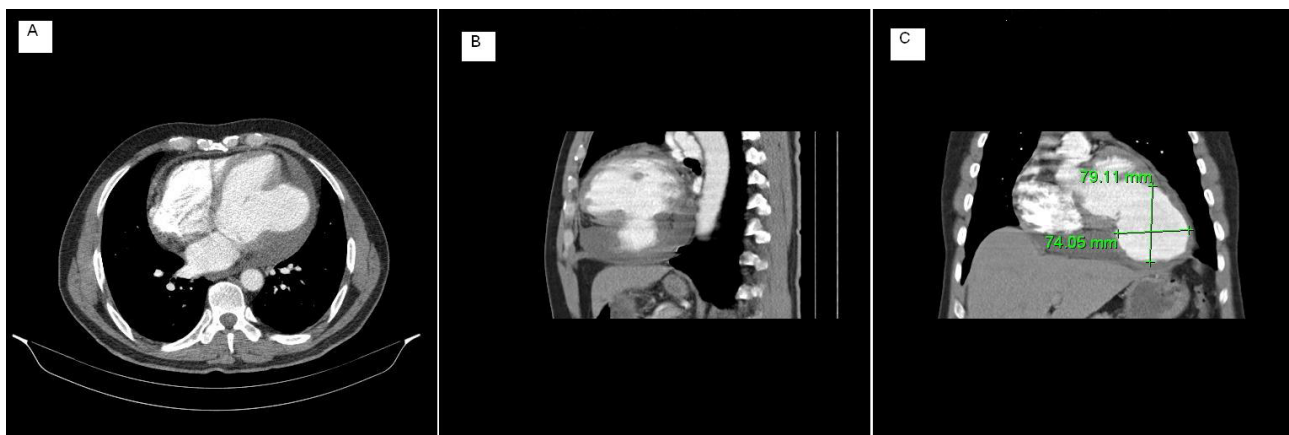
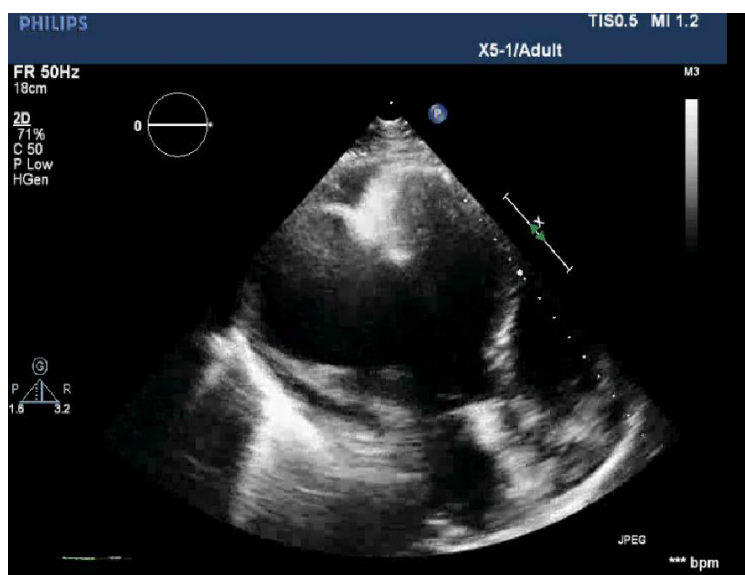
Clinical case blog

Title : Giant Left Ventricular Pseudoaneurysm

Bahadır Sarlı¹, Ahmet Oguz Baktir¹, Ümit Erkan Vurdem²

¹Department of Cardiology, Kayseri Education and Research Hospital, Kayseri, Turkey

²Department of Radiology, Kayseri Education and Research Hospital, Kayseri, Turkey



Left Ventricular (LV) pseudoaneurysm is a rare complication of myocardial infarction which develops in leads to increased morbidity and mortality [1,2,3]. LV rupture limited by pericardium and in situ thrombosis is the chief point of pseudoaneurysm formation. Hence, LV pseudoaneurysm has a high risk for spontaneous rupture. Hereby, we present a matchless image of a giant left ventricular pseudoaneurysm mimicking the heart symbol which was described by Cro-magnons 28.000 years ago [4].

Case blog

A 56 years old male patient was admitted to our clinic for acute heart failure. He had history of chest pain 1 week ago. There were bibasillary pulmonary rales and S3 in his physical examination. ECG revealed non-specific ST and T wave changes. Troponin I level 0.33 ng/ml. Transthoracic echocardiogram revealed a huge 7x7 cm aneurysm of posterolateral wall with sponta-

*Corresponding author: Bahadır Sarlı, Kayseri Education and Research Hospital, Department of Cardiology, 38010, Kayseri, Turkey, Tel: +90 535 3040445; Fax: +90 352 3207313; E-Mail: drsarli@yahoo.com

Copyright: © 2014 Sarlı B. This is an open-access article distributed under the terms of the Creative Commons Attribution License, which permits unrestricted use, distribution, and reproduction in any medium, provided the original author and source are credited.

neous echo contrast within the aneurysm (Figure 1). Multislice BT confirmed the presence of aneurysm (Figure 2). Coronary angiography revealed non-critical stenosis at left circumflex artery and left anterior descending artery (Figure 3). Our heart team considered that this aneurysm was probably due to a coronary event occurred 1 week ago during patients chest pain. Medical treatment targeting heart failure failed to relieve patients' symptoms. Thus, patients was scheduled to repair surgery and transferred to cardiovascular surgery department. Postoperative period until discharge was uneventful.

Discussion

Left ventricular pseudoaneurysms usually develop as a consequence of transmural myocardial infarction. It is a potentially fatal complication of myocardial infarction which may progress to left ventricular free wall rupture in 30% to 45% of untreated patients [5]. In deed, LV pseudoaneurysm is a kind of LV free wall rupture limited by the overlying pericardium [6]. Having a neck that is narrower than the diameter of the aneurysm is the hallmark of LV pseudoaneurysm. Delayed revascularisation is the leading cause of pseudoaneurysm formation [7]. Transthoracic echocardiography is the most feasible way of diagnosing LV pseudoaneurysm. Although surgical mortality is high, it is still the most appropriate way of curative treatment in patients with LV pseudoaneurysm [8]. In this report, we presented a giant LV pseudoaneurysm mimicking the sign of love in a patient presenting with heart failure.

References

1. Connelly CM1, McLaughlin RJ, Vogel WM, Apstein CS (1991) Reversible and irreversible elongation of ischemic, infarcted, and healed myocardium in response to increases in preload and afterload. *Circulation* 84: 387-399.
2. Weaver WD1, Simes RJ, Betriu A, Grines CL, Zijlstra F, et al. (1997) Comparison of primary coronary angioplasty and intravenous thrombolytic therapy for acute myocardial infarction: a quantitative review. *JAMA* 278: 2093-2098.
3. Sarlı B1, Baktir AO, Saglam H, Arinc H, Kurtul S, et al. (2013) Mean platelet volume is associated with poor postinterventional myocardial blush grade in patients with ST-segment elevation myocardial infarction. *Coron Artery Dis* 24: 285-289.
4. Puech PF1, Puech B (2012) Can we still hear the Cro-magnon man? *Acta Med Hist Adriat* 10: 331-338.
5. Gan HL1, Zhang JQ (2009) Diagnosis and surgical treatment of post-infarction left ventricular pseudoaneurysm. *Chin Med J (Engl)* 122: 232-235.
6. Kansiz E, Hatemi AC, Tongut A, Cohcen S, Yildiz A, et al. (2012) Surgical treatment of a giant postero-inferior left ventricular pseudoaneurysm causing severe mitral insufficiency and congestive heart failure. *Ann Thorac Cardiovasc Surg* 18:151-155.
7. French JK1, Hellkamp AS, Armstrong PW, Cohen E, Kleiman NS, et al. (2010) Mechanical complications after percutaneous coronary intervention in ST-elevation myocardial infarction (from APEX-AMI). *Am J Cardiol* 105: 59-63.
8. Frances C1, Romero A, Grady D (1998) Left ventricular pseudoaneurysm. *J Am Coll Cardiol* 32: 557-561.

Submit your next manuscript and get advantages of OMICS Group submissions

Unique features:

- User friendly/feasible website-translation of your paper to 50 world's leading languages
- Audio Version of published paper
- Digital articles to share and explore

Special features:

- 300 Open Access Journals
- 25,000 editorial team
- 21 days rapid review process
- Quality and quick editorial, review and publication processing
- Indexing at PubMed (partial), Scopus, EBSCO, Index Copernicus and Google Scholar etc
- Sharing Option: Social Networking Enabled
- Authors, Reviewers and Editors rewarded with online Scientific Credits
- Better discount for your subsequent articles

Submit your manuscript at: <http://www.omicsonline.org/submission>

*Corresponding author: Bahadır Sarlı, Kayseri Education and Research Hospital, Department of Cardiology, 38010, Kayseri, Turkey, Tel: +90 535 3040445; Fax: +90 352 3207313; E-Mail: drsarlı@yahoo.com