

Clinical Image

Lymphoma Presenting as a Breast Mass

Ansari M* and Sen S

Department of Internal Medicine, Raritan Bay Medical Center, Perth Amboy, NJ-08861, USA

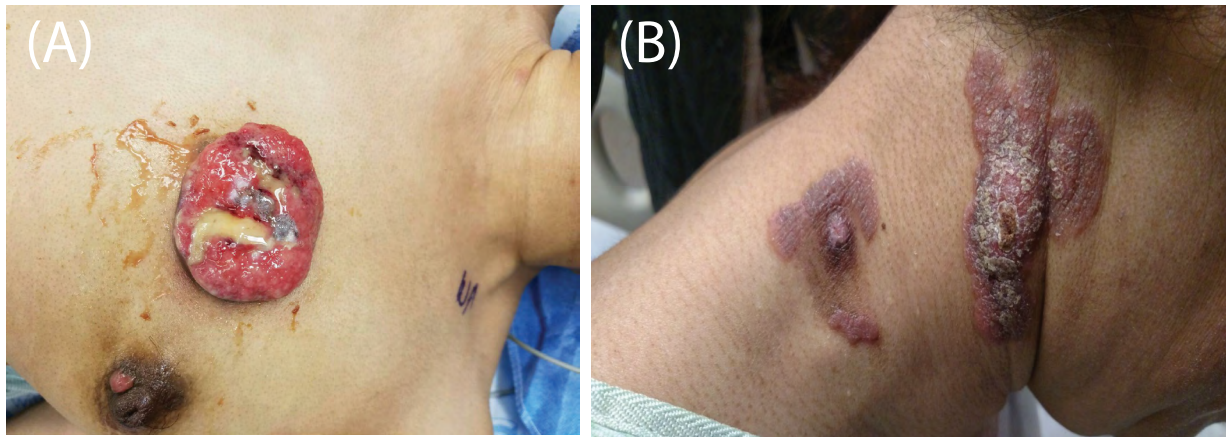


Figure 1: Female presented with the complaint of progressive swelling over her left breast.

Figure 2: Raised lesions on chest and axilla.

Clinical Image

A 48 year old female presented with the complaint of progressive swelling over her left breast (Figure 1), along with raised lesions on her chest and axilla (Figure 2). A CT scan of the chest revealed a breast mass along with enlarged axillary lymph nodes. The mass was excised and pathology showed small lymphocytes (70%) and large pleomorphic cells (30%) with one or more nucleoli and vesicular chromatin positive for CD2, CD3, CD4, CD5, CD25, CD43, CD45, CD99, BCL2, and Cyclin D.

The diagnosis of Mycosis Fungoides, Stage II B was made. Peripheral T cell lymphomas represent less than 15% of all Non-Hodgkin's lymphomas, representing less than 0.5% of all breast malignancies. Compared to their B-cell counterparts, T-cell lymphomas in the breast have a very aggressive clinical course due to their antigen aberrancy and poor response to chemotherapy.

*Corresponding author: Mohammad Ansari, Department of Internal Medicine, Raritan Bay Medical Center, Perth Amboy, NJ-08861, USA, Tel: (732) 442-3700; E-mail: jamalansari@hotmail.com

Citation: Ansari M, Sen S (2017) Lymphoma Presenting as a Breast Mass. *Int J Clin Med Imaging* 4: 565. doi:[10.4172/2376-0249.1000565](https://doi.org/10.4172/2376-0249.1000565)

Copyright: © 2017 Ansari M, et al. This is an open-access article distributed under the terms of the Creative Commons Attribution License, which permits unrestricted use, distribution, and reproduction in any medium, provided the original author and source are credited.