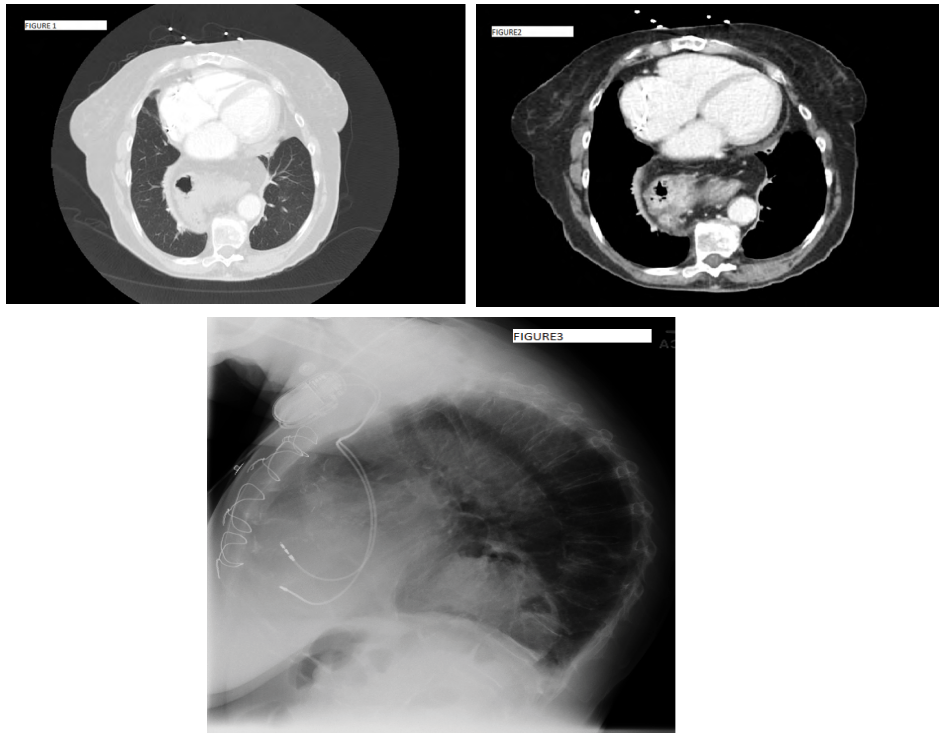


Clinical Image

## Para-Esophageal Hiatal Hernia with entire Stomach within the Chest

Sana Najib\*, Nivarthi Bharadwaj, Tahmina Saleem, Sameera Syed and S.Sen

Raritan Bay Medical Centre, Perth Amboy, NJ 08861, USA



**Figure 1:** CT Scan Chest Showing Para-esophageal hiatal hernia.

**Figure 2:** CT Scan Chest Showing Para-esophageal hiatal hernia.

**Figure 3:** Chest X-ray Showing Entire Stomach with in the chest.

### Clinical Image

**Roemheld syndrome (RS)**, also known as **gastric-cardia**, is a syndrome where abnormalities in the gastrointestinal tract are found to be associated with cardiac symptoms like arrhythmias and palpitations, in the context of a normal cardiac workup. The underlying mechanism is that the mechanical pressure from GI organs on the heart reduces the cardiac filling, as well as causes compression of the vagus nerve leading to rhythm abnormalities. This case is regarding a 49 years old female with a large para-esophageal hiatal hernia (Figure 1 and 2) who developed paroxysmal atrial fibrillation. Patient was treated temporarily with rate control medications and anticoagulation and finally underwent hernia repair with complete resolution of atrial fibrillation.

\*Corresponding author: Sana Najib, 358 rector street apt. #401, Raritan Bay Medical Centre, Perth Amboy, NJ - 08861, USA, Tel: +1-609-906-2423; E-mail: sananajib@yahoo.com

Citation: Najib S, Bharadwaj N, Saleem T, Syed S, Sen S (2018) Para Esophageal Hiatus Hernia with the Entire Stomach within the Chest. *Int J Clin Med Imaging* 5: 608. doi:10.4172/2376-0249.1000608

Copyright: © 2018 Najib S, et al. This is an open-access article distributed under the terms of the Creative Commons Attribution License, which permits unrestricted use, distribution, and reproduction in any medium, provided the original author and source are credited.