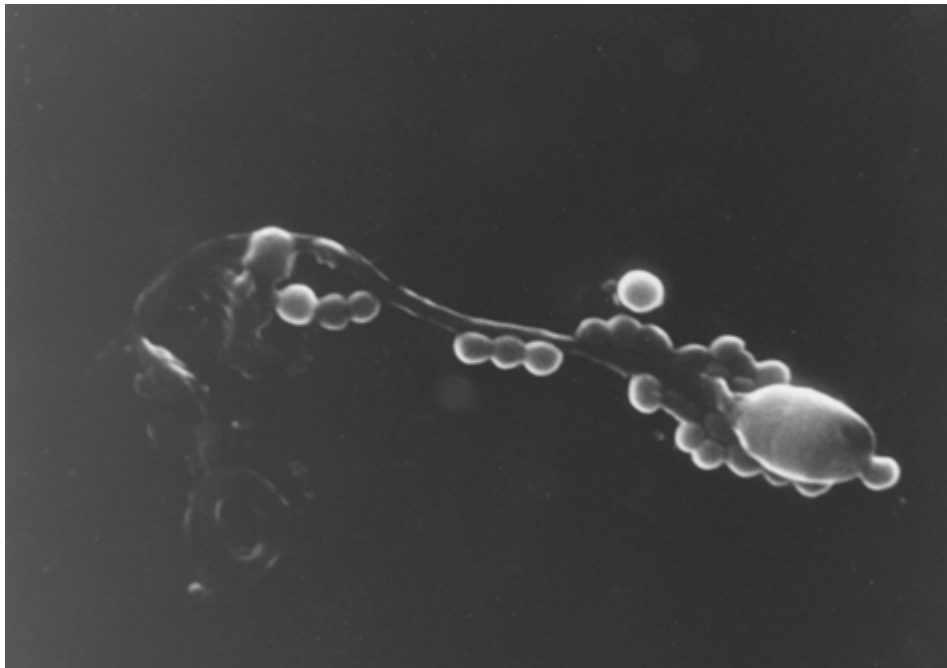


Clinical Image

Title: Scanning Electron Micrograph showing Adherence of *Staphylococcus aureus* to Human Sperm

Vijay Prabha



The interaction of *Staphylococcus aureus* with human spermatozoa has been studied using Scanning Electron Microscopy. The electron micrographs showed close association between *S. aureus* and sperm. The bacteria were seen to adhere to entire sperm i.e. head, neck and tail. Along with adherence a prominent morphological defect i.e. curling of tail can also be seen.