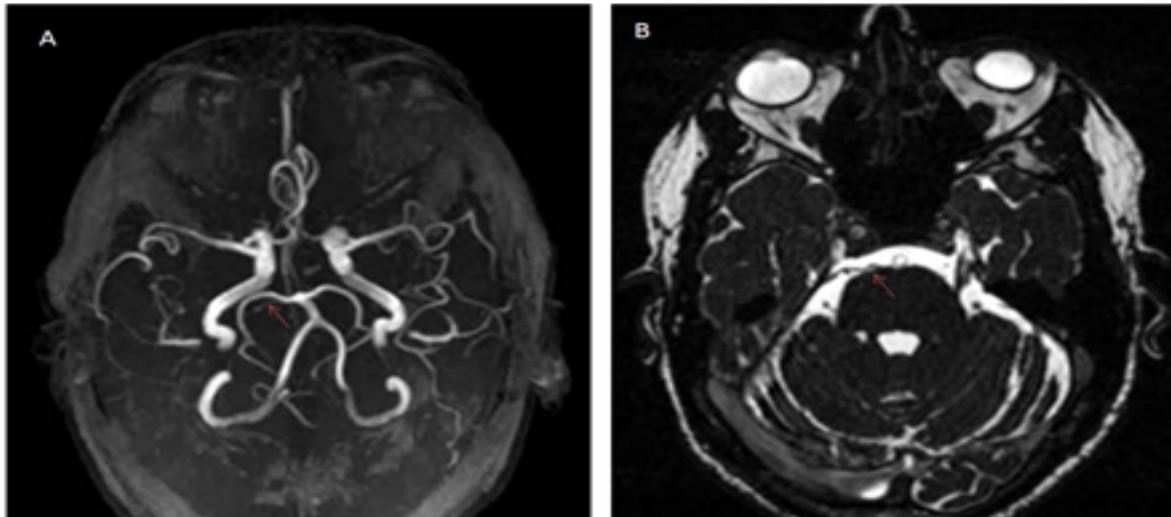


## Clinical Image

### Title: Superior Cerebellar Artery Compressing the Trigeminal Nerve

Prashanth Panta\*, and Venkat Raghavender Reddy

Department of Oral Medicine and Radiology, MNR Dental College and Hospital, India



This is a 53 year old Caucasian man, with past medical history of tobacco use, COPD, referred to our hematology clinic due to hyper dense liver on CT scan that was done for work up of weight loss and also high ferritin. He had complaints of mild fatigue and joint pain mostly at 2nd and 3rd MCP going.