

PPT Presentation

**Amal H Abuaffan\***

# **Title: Tongue Abnormalities**

Faculty of Dentistry, University of Khartoum, Sudan

E-mail: [amalabuaffan@yahoo.com](mailto:amalabuaffan@yahoo.com)

This is a case study of tongue abnormalities seen among university students when the research was carried out about the prevalence of the tongue abnormalities. The results of the research shows different types of tongue abnormalities:

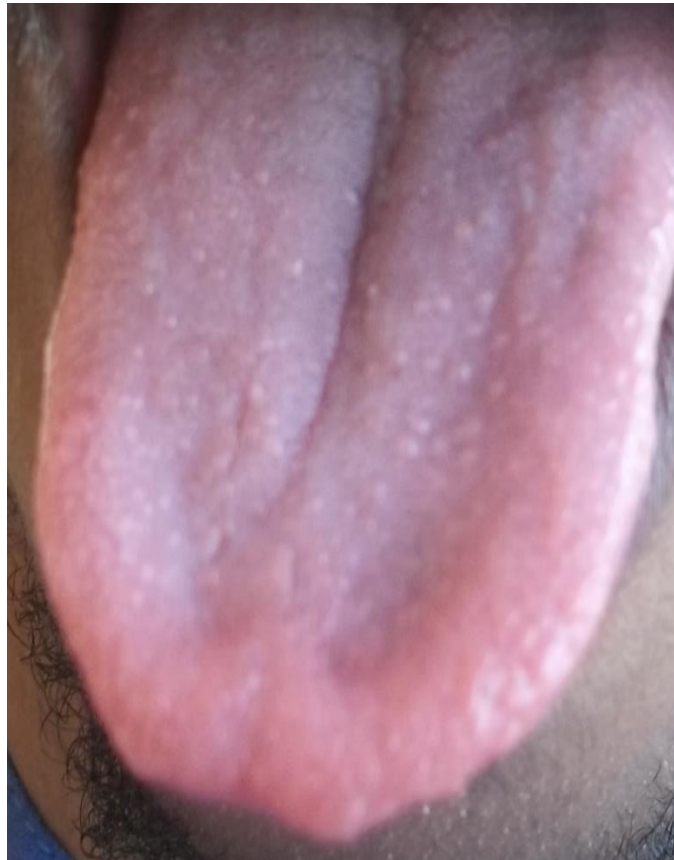
- 1) Fissure tongue
- 2) Bifid tongue
- 3) Geographic tongue

The research continuous to find the root cause of this prevalence

# Fissure tongue



# Bifid tongue



# Geographic tongue

