

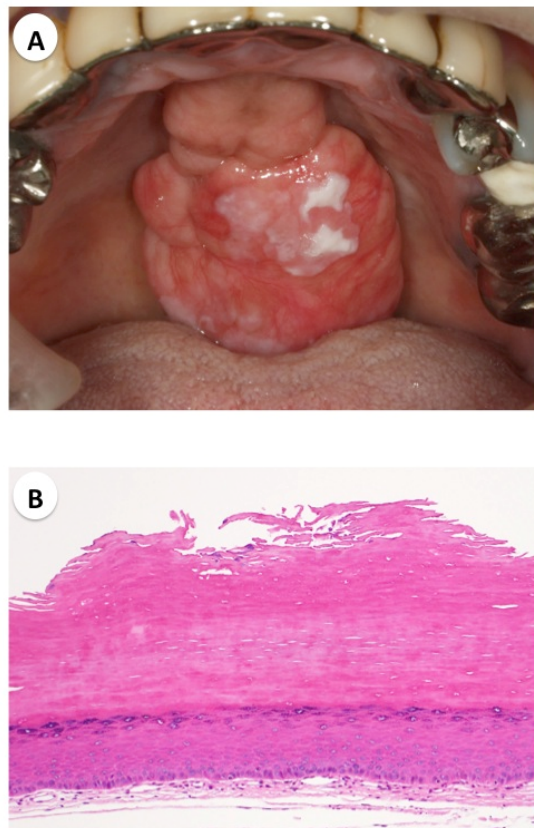
Clinical Images

Title: Leukoplakia on Torus Palatinus

Toshihiro Inagaki¹, Makoto Adachi^{1,*}, Kei Ijichi², Masayuki Motohashi¹ and Yasunori Muramatsu¹

¹Department of Oral and Maxillofacial Surgery, Asahi University Murakami Memorial Hospital, Gifu, 500-8523, Japan

²Department of Otolaryngology-Head and Neck Surgery, Nagoya City University Graduate School of Medical Sciences, Nagoya 467-8601, Japan



A 65-year-old woman was referred to our clinic complaining of white lesions on the palate and of the surface feeling rough when the tongue touched it. She had no special medical problems, and no history of smoking or alcohol. Intraoral findings were of a hard mass on the palate 40×22 mm in diameter and with white lesions on the surface (Figure A). The white lesions were excised with adequate margins and bone mass under the mucosa was removed surgically. The pathology report diagnosed the white lesion as leukoplakia without atypical cells (Figure B). The patient had no complications or dysfunction after surgery. Torus palatinus is found in 20-30% of the population and is usually less than 2 cm in diameter. Most torus palatinus are asymptomatic and found by routine oral examination. White lesion of oral mucosa needs differential diagnosis such as candidiasis, lichen planus and leukoplakia. The leukoplakia may occur due to repeat irritation at the site.

*Corresponding author: Makoto Adachi, DDS, PhD, Department of Oral and Maxillofacial Surgery, Asahi University Murakami Memorial Hospital, 3-23 Hashimotocho, Gifu 500-8523, Japan, Tel: +81-58-253-8011; E-mail: madachi DDS PhD@yahoo.co.jp

Copyright: © 2014 Toshihiro I, et al. This is an open-access article distributed under the terms of the Creative Commons Attribution License, which permits unrestricted use, distribution, and reproduction in any medium, provided the original author and source are credited.