

Clinica-Medical Image

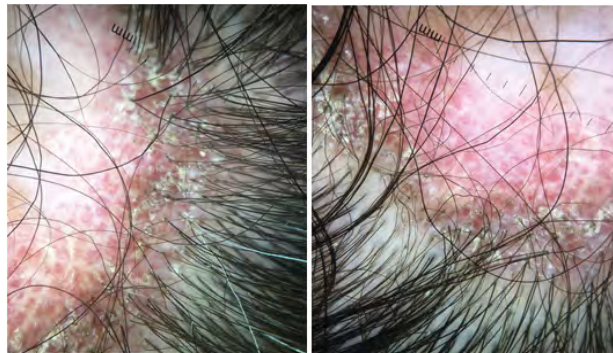
## Dermoscopy of Discoid Lupus

Assenhaji Louizi Ibtissam\*, Douhi Z, Elloudi S, Baybay H, Mernissi FZ

Department of Dermatology, Hassan II Hospital University, Fez, Morocco



**Figure 1:** Cicatricial alopecia over the scalp with erythema, minimal scaling, hyper and depigmentation.



**Figure 2:** Dermoscopy showing linear irregular vessels, telangiectasias and keratin plug, structure white areas, and structure brown areas.

### Clinical Image

Discoid Lupus Erythematosus (DLE) is the most common subtype of cutaneous lupus erythematosus. Dermoscopy is useful for inflammatory skin disorders. It has differentiated DLE from other causes of scarring alopecia. We report the case of a 39-year-old woman, with no notable pathological antecedents, who present multiple plaques erythematous-squamous, alopecic scars from the scalp, with a negative pull sign (Figure 1). Dermoscopy revealed cicatricial alopecia, with the presence of keratin plugs at the periphery of the plates, and brown and white areas without structure, irregular linear vessels as well as telangiectasias, (Figure 2). Histopathology confirmed the diagnosis of discoid lupus erythematosus.

#### Keywords:

Discoid lupus; Dermoscopy; Erythematosus

\*Corresponding author: Assenhaji Louizi Ibtissam, Department of Dermatology, Hassan II Hospital University, Fez, Morocco, E-mail: assenhaji.louizi@outlook.fr

Citation: Ibtissam AL, Douhi Z, Elloudi S, Baybay H, Mernissi FZ (2020) Dermoscopy of Discoid Lupus. *Int J Clin Med Imaging* 7: 672.

Copyright: © 2020 Ibtissam AL, et al. This is an open-access article distributed under the terms of the Creative Commons Attribution License, which permits unrestricted use, distribution, and reproduction in any medium, provided the original author and source are credited.