

Image Article

Reed Neavi

Aicha Nassiri*, Niema Aqil and Fatima Zahra Mernissi

Department of Dermatology, Hassan II Hospital University, Morocco



Figure 1: Black papule in a thigh.

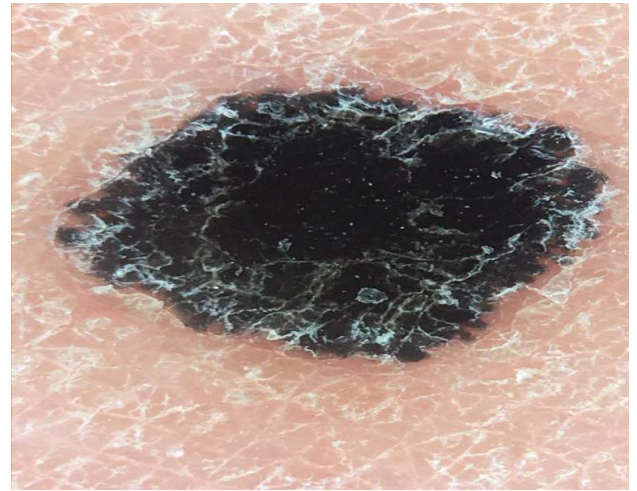


Figure 2: Dermoscopy: Starburst pattern.

Clinical Image

Spitzoid lesions represent a challenging and controversial group of tumours, in terms of clinical recognition, biological behaviour and management strategies. A 5-year-old presented with a 3 mm black papule on the thigh (Figure 1). Dermoscopy showed a starburst pattern. The patient had an excision of the lesion and the histology confirmed the diagnosis of reed neavi (Figure 2).

*Corresponding author: Aicha Nassiri, Department of Dermatology, Hassan II Hospital University, Morocco; E-mail: aichanassiri6@gmail.com

Citation: Nassiri A, Aqil N, Mernissi ZF (2019) Reed Neavi. *Int J Clin Med Imaging* 6: 638. doi:[10.4172/2376-0249.1000638](https://doi.org/10.4172/2376-0249.1000638)

Copyright: © 2019 Nassiri A, et al. This is an open-access article distributed under the terms of the Creative Commons Attribution License, which permits unrestricted use, distribution, and reproduction in any medium, provided the original author and source are credited.
